

Long life

Ripple
Current

RoHS

- High ripple capability than LHA series
- Endurance with ripple current:5000hours at 105°C RoHS compliant.
- Applicable to Equipment for manufacturing circuit board, Reflow soldering process equipment, wave soldering equipment, Miniature digital processing equipment, Intelligent power distribution switch, Power quality products, reactive compensation equipments, The associated control devices

◆ SPECIFIC ATIONS

items	Characteristics	
Category temperature Range	-25~+105°C	
Rated voltage Range	6.3~550 _{VDC}	
Capacitance Tolerance	± 20% (M)	at 20°C/120HZ
Leakage Current	I=0.02CV or 5mA, whichever is smaller I: Where, I : Max. leakage current (μA), C: Nominal capacitance (μF), Rated voltage (V) at 20°C after 5 minutes)	
Dissipation Factor (tanδ)	0.15max	at 20°C/120HZ
Low Temperature characteristics	Capacitance change C (-25°C) / C (+20°C) ≥ 0.7	at 20°C/120HZ
Insulation Resistance	When measured between the terminals that are connected to each other and to the mounting damp on the insulating sleeve covering the case by using an insulation resistance meter of 500Vdc, the insulation resistance shall not be less than 100mΩ	
Insulation Withstanding Voltage	When a voltage of 2,000Vac is applied for 1 minute between the terminals that are connected to each other and to the mounting clamp on the insulating sleeve covering the case, there shall not be electrical damage. .	
Endurance	The following specifications shall be satisfied when the capacitors are restored to 20°C after subjected to DC voltage with the rated ripple current is applied (the peak voltage shall not exceed the rated voltage) for 5,000 hours at 105°C.	
	Capacitance change	≤±20% of the initial value
	D.F. (tanδ)	≤200% of the initial specified value
	Leakage current	≤The initial specified value
Shelf Life	The following specifications shall be satisfied when the capacitors are restored to 20°C after exposing them for 1000 hours at 105°C without voltage applied. Before the measurement, the capacitor shall be preconditioned by applying voltage according to Item 4.1 of JIS C 5101-4	
	Capacitance change	≤±20% of the initial value
	D.F. (tanδ)	≤150% of the initial specified value
	Leakage current	≤The initial specified value

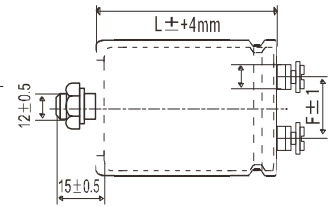
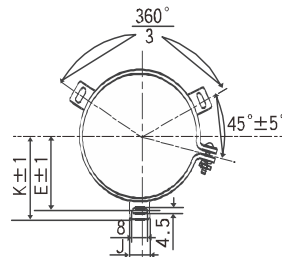
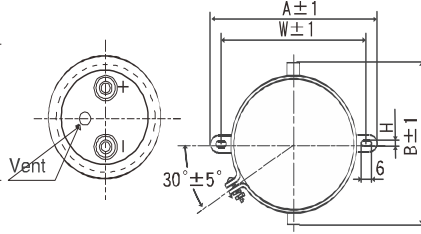
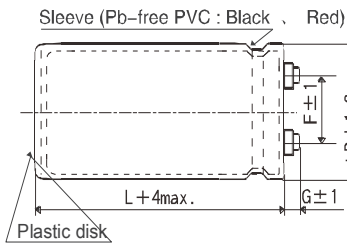
◆ DIMENSIONS[mm]

● Terminal Code : M5

● Mounting Clamp Code : B

● Mounting Clamp Code : C

● NO Mounting Clamp Code : N



Ø35~ Ø63.5: G=6

Ø76.2~ Ø89: G=5

Screw specifications

~ ~ Plus hexagon-headed screw M5*0.8*10 M6*1.0*10 Ø100

Maximum screw tightening torque 3.23N.m The screw and the mounting clamp are separately supplied and not attached to the product

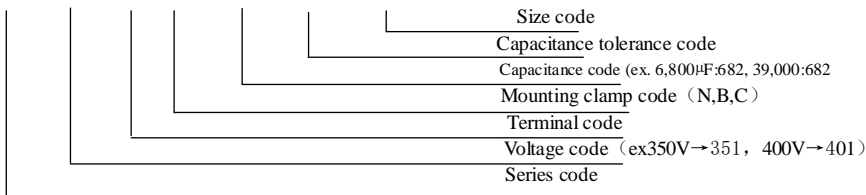
ØD	A	B	W	H	F
35	58.0	44.0	48.0	3.5	12.7
50	78.0	64.0	68.0	4.5	22.4
63.5	90.0	76.0	80.0	4.5	28.0
76.2	104.5	90.0	93.5	4.5	31.5

ØD	E	K	F	J
50	32.5	37.0	14.0	22.4
63.5	38.1	43.5	28.0	14.0
76.2	44.5	50.0	31.5	14.0
89	50.8	56.5	31.5	16.0
100	56.5	63.4	41.5	18.0



◆PART NUMBERING SYSTEM

123 4 5 6 78 9 101112 13 141516
 LGR □□□ M5 □ □□□ M □□□



Please refer to "Product code guide (screw-mount terminal type)"

SRANDRAD RATINGS

Rated voltage UR [V]	Rated cap. CR [µ F]	Case size D x L [mm]	Typ. ESR 100 Hz, 20° C [mΩ]	Ripple current IR~100 Hz, 95°C [A]	Order code	Rated voltage UR [V]	Rated cap. CR [µ F]	Case size D x L [mm]	Typ. ESR 100 Hz, 20° C [mΩ]	Ripple current IR~100 Hz, 95°C [A]	Order code		
6.3v 8sv	27000	35*40	46.9	4.7	LGR6R3M5B273MA40	6.3v 8sv	740000	76*106	2.9	42.5	LGR6R3M6C744MEA6		
	55000	35*55	26.5	6.9	LGR6R3M5B553MA55		760000	65*141	2.8	42.9	LGR6R3M6C764MDE1		
	66000	35*65	18.8	8.9	LGR6R3M5B663MA65		880000	76*116	2.6	46.7	LGR6R3M6C884MEB6		
	87000	35*80	14.7	10.7	LGR6R3M5B873MA80		980000	76*131	2.4	50.6	LGR6R3M6C984MED1		
	96000	35*55	18.8	9.6	LGR6R3M5B963MA55		1100000	76*141	2.4	51.3	LGR6R3M6C115MEE1		
	110000	35*90	12.8	12.1	LGR6R3M5B114MA90		1100000	89*106	3.0	46.4	LGR6R3M6C115MFA6		
	120000	35*65	14.3	11.8	LGR6R3M5B124MA65		1100000	89*116	2.6	51.0	LGR6R3M6C115MFB6		
	120000	50*55	14.2	12.0	LGR6R3M5B124MC55		1200000	76*146	2.4	52.0	LGR6R3M6C125MEE6		
	130000	35*106	11.0	13.7	LGR6R3M5B134MAA6		1400000	89*131	2.4	55.4	LGR6R3M6C145MFD1		
	140000	50*65	9.9	15.5	LGR6R3M5B144MC65		1600000	89*141	2.4	56.1	LGR6R3M6C165MFE1		
	150000	35*116	9.8	15.2	LGR6R3M5B154MAB6		1600000	76*192	2.6	55.9	LGR6R3M6C165MEK1		
	160000	35*78	11.0	14.3	LGR6R3M5B164MA78		1700000	89*146	2.4	57.0	LGR6R3M6C175MFE6		
	170000	35*131	8.9	16.5	LGR6R3M5B174MAD1		1800000	76*217	2.4	58.6	LGR6R3M6C185MEN7		
	190000	35*141	8.3	17.8	LGR6R3M5B194MAE1		2300000	89*192	2.4	61.7	LGR6R3M6C235MFK1		
	190000	35*90	9.1	16.6	LGR6R3M5B194MA90		2600000	89*217	2.4	64.4	LGR6R3M6C265MFN7		
	6.3v 8sv	200000	50*80	7.8	18.4		LGR6R3M5B204MC80	10v 12sv	22000	35*40	46.9	4.7	LGR010M5B223MA40
		230000	35*106	7.9	18.7		LGR6R3M5B234MAA6		39000	35*55	26.5	6.9	LGR010M5B393MA55
		250000	50*90	6.5	21.4		LGR6R3M5B254MC90		52000	35*65	20.1	8.6	LGR010M5B523MA65
250000		65*65	6.9	21.2	LGR6R3M6C254MD65	70000	35*80		15.5	10.5	LGR010M5B703MA80		
270000		35*116	7.0	20.6	LGR6R3M5B274MAB6	71000	35*55		18.8	9.6	LGR010M5B713MA55		
300000		50*106	5.6	24.1	LGR6R3M5B304MCA6	87000	35*90		12.8	12.1	LGR010M5B873MA90		
310000		35*131	6.4	22.4	LGR6R3M5B314MAD1	95000	35*65		14.3	11.8	LGR010M5B953MA65		
340000		65*80	5.3	25.8	LGR6R3M6C344MD80	100000	35*106		11.0	13.7	LGR010M5B104MAA6		
350000		35*141	6.0	24.0	LGR6R3M5B354MAE1	100000	50*55		17.6	10.7	LGR010M5B104MC50		
360000		50*116	5.0	26.6	LGR6R3M5B364MCB6	120000	35*116		9.8	15.2	LGR010M5B124MAB6		
410000		50*131	4.5	28.8	LGR6R3M5B414MCD1	130000	35*80		11.0	14.3	LGR010M5B134MA80		
420000		65*90	4.3	29.9	LGR6R3M6C424MD90	130000	50*65		13.4	13.3	LGR010M5B134MC65		
450000		50*141	4.2	30.9	LGR6R3M5B454MCE1	140000	35*131		41.9	16.5	LGR010M5B144MAD1		
500000		76*80	4.1	32.9	LGR6R3M6C504ME80	160000	35*141		8.3	17.8	LGR010M5B164MAE1		
510000		65*106	3.8	33.4	LGR6R3M6C514MDA6	160000	35*90		9.1	16.6	LGR010M5B164MA90		
580000		65*116	3.4	36.8	LGR6R3M6C584MDB6	160000	50*80		10.5	16.0	LGR010M5B164MC80		
620000		76*90	3.3	32.8	LGR6R3M6C624ME90	190000	35*106		7.9	18.7	LGR010M5B194MAA6		
680000		65*131	3.1	40.0	LGR6R3M6C684MDD1	200000	50*90		8.7	18.5	LGR010M5B204MC90		



10v 12sv	200000	65*65	8.8	18.9	LGR010M6C204MD65	16v 20sv	190000	65*80	6.7	22.9	LGR016M6C194MD80
	220000	35*116	7.0	20.6	LGR010M5B224MAB6		200000	35*141	7.8	21.1	LGR016M5B204MAE1
	240000	50*106	7.5	20.8	LGR010M5B244MCA6		200000	50*116	6.7	22.9	LGR016M5B204MCB6
	250000	35*131	6.4	22.4	LGR010M5B254MAD1		220000	50*131	6.1	24.8	LGR016M5B224MCD1
	270000	65*80	6.7	22.9	LGR010M6C274MD80		230000	65*90	5.5	26.5	LGR016M6C234MD90
	280000	35*141	6.0	24.0	LGR010M5B284MAE1		250000	50*141	5.7	26.5	LGR016M5B254MCE1
	280000	50*116	6.7	22.9	LGR010M5B284MCB6		280000	65*106	5.0	29.2	LGR016M6C284MDA6
	320000	50*131	6.1	24.8	LGR010M5B324MCD1		280000	76*80	4.2	32.4	LGR016M6C284ME80
	340000	65*90	5.5	26.5	LGR010M6C344MD90		320000	65*116	4.6	31.44	LGR016M6C324MDB6
	360000	50*141	5.7	26.5	LGR010M5B364MCE1		350000	76*90	3.6	36.8	LGR016M6C354ME90
	400000	76*80	4.1	32.9	LGR010M6C404ME80		370000	65*131	4.4	33.4	LGR016M6C374MDD1
	410000	65*106	4.8	29.6	LGR010M6C414MDA6		420000	65*141	4.2	35.2	LGR016M6C424MDE1
	480000	65*116	4.3	32.6	LGR010M6C484MDB6		420000	76*106	3.3	40.2	LGR016M6C424MEA6
	500000	76*90	3.3	38.2	LGR010M6C504ME90		490000	76*116	3.1	42.8	LGR016M6C494MEB6
	550000	65*131	3.9	35.3	LGR010M6C554MDD1		550000	76*131	2.8	46.2	LGR016M6C554MED1
	600000	76*106	2.9	42.5	LGR010M6C604MEA6		600000	89*106	2.9	47.3	LGR016M6C604MFA6
	610000	65*141	3.6	37.9	LGR010M6C614MDE1		610000	76*141	2.8	48.1	LGR016M6C614MEE1
	700000	76*116	2.6	46.7	LGR010M6C704MEB6		640000	76*146	2.8	48.8	LGR016M6C644MEE6
	800000	76*131	2.4	50.6	LGR010M6C804MED1		700000	89*116	2.8	49.7	LGR016M6C704MFB6
	830000	89*106	2.9	47.3	LGR010M6C834MFA6		800000	89*131	2.5	54.4	LGR016M6C804MFD1
870000	76*141	2.3	53.0	LGR010M6C874MEE1	870000	89*141	2.4	56.7	LGR016M6C874MF1		
930000	76*146	2.3	53.3	LGR010M6C934MEE6	900000	76*192	2.6	54.1	LGR016M6C904MEK2		
970000	89*116	2.8	49.6	LGR010M6C974MFB6	920000	89*146	2.4	57.3	LGR016M6C924MFE6		
1100000	89*131	2.5	54.5	LGR010M6C115MFD1	1000000	76*217	2.6	57.1	LGR016M6C105MEN7		
1200000	89*141	2.2	59.0	LGR010M6C125MFE1	1300000	89*192	2.3	63.1	LGR016M6C135MFK2		
1300000	89*146	2.1	60.8	LGR010M6C135MFE6	1500000	89*217	2.3	66.4	LGR016M6C155MNF7		
1300000	76*192	2.1	60.1	LGR010M6C135MEK2	11000	35*40	37.1	5.3	LGR025M5B113MA40		
1500000	76*217	2.1	63.7	LGR010M6C155MEN7	18000	35*55	23.6	7.4	LGR025M5B183MA55		
1700000	89*192	1.8	73.4	LGR010M6C175MFK2	26000	35*65	16.9	9.4	LGR025M5B263MA65		
2000000	89*217	1.5	80.5	LGR010M6C205MNF7	33000	35*55	21.8	8.9	LGR025M5B333MA55		
15000	35*40	46.9	4.7	LGR016M5B153MA40	34000	35*65	17.1	10.0	LGR025M5B343MA65		
27000	35*55	26.5	6.9	LGR016M5B273MA55	39000	35*65	19.4	10.2	LGR025M5B393MA65		
36000	35*65	20.1	8.6	LGR016M5B363MA65	43000	35*90	17.7	10.3	LGR025M5B433MA90		
48000	35*80	15.5	10.5	LGR016M5B483MA80	47000	50*55	21.8	9.7	LGR025M5B473MC55		
49000	35*55	18.8	9.6	LGR016M5B493MA50	51000	35*106	16.3	11.3	LGR025M5B513MAA6		
61000	35*90	12.8	12.1	LGR016M5B613MA90	53000	50*65	16.5	12.0	LGR025M5B533MC65		
66000	35*65	15.3	11.4	LGR016M5B663MA65	54000	35*80	15.2	12.2	LGR025M5B543MA80		
71000	50*55	17.6	10.7	LGR016M5B713MC55	60000	35*116	15.4	12.1	LGR025M5B603MAB6		
73000	35*106	11.0	13.7	LGR016M5B733MAA6	69000	35*131	14.4	13.0	LGR025M5B693MAD1		
85000	35*116	9.8	15.2	LGR016M5B853MAB6	69000	50*80	12.2	14.8	LGR025M5B693MC80		
88000	35*80	12.5	13.5	LGR016M5B883MA80	70000	35*90	12.8	14.1	LGR025M5B703MA90		
90000	50*65	13.4	13.3	LGR016M5B903MC65	77000	35*141	13.4	14.0	LGR025M5B773MAE1		
97000	35*131	8.9	16.5	LGR016M5B973MAD1	82000	65*65	9.5	18.1	LGR025M6C823MD65		
110000	35*141	8.3	17.8	LGR016M5B114MAE1	86000	35*106	11.2	15.7	LGR025M5B863MAA6		
110000	35*90	10.9	15.2	LGR016M5B114MA90	89000	50*90	9.8	17.4	LGR025M5B893MC90		
110000	50*80	10.5	16.0	LGR016M5B114MC80	100000	35*116	10.2	17.1	LGR025M5B104MAB6		
130000	35*106	9.7	16.9	LGR016M5B134MAA6	110000	50*106	8.3	19.7	LGR025M5B114MCA6		
140000	50*90	8.7	18.5	LGR016M5B144MC90	110000	65*80	7.6	21.5	LGR025M6C114MD80		
140000	65*65	8.8	18.9	LGR016M6C144MD65	120000	35*141	9.6	18.4	LGR025M5B124MAE1		
150000	35*116	8.8	18.5	LGR016M5B154MAB6	130000	35*116	9.1	19.5	LGR025M5B134MAB6		
170000	50*106	7.5	20.8	LGR016M5B174MCA6	130000	50*116	7.3	21.9	LGR025M5B134MCB6		
180000	35*131	8.2	19.9	LGR016M5B184MAD1	150000	50*131	6.6	23.9	LGR025M5B154MCD1		



25v 30sv	150000	65*90	6.4	24.6	LGR025M6C154MD90	35v 40sv	110000	76*80	6.9	25.3	LGR035M6C114ME80
	170000	50*141	6.1	25.7	LGR025M5B174MCE1		130000	65*116	7.4	24.8	LGR035M6C134MDB6
	170000	76*80	5.0	29.7	LGR025M6C174ME80		140000	76*90	5.7	29.1	LGR035M6C144ME90
	180000	65*106	5.8	27.0	LGR025M6C184MDA6		150000	65*131	6.8	26.8	LGR035M6C154MDD1
	210000	65*116	5.2	29.5	LGR025M6C214MDB6		170000	65*141	6.1	29.2	LGR035M6C174MDE1
	220000	76*90	4.3	31.1	LGR025M6C224ME90		170000	76*106	5.2	32.0	LGR035M6C174MEA6
	250000	65*131	5.0	33.6	LGR025M6C254MDD1		200000	76*116	4.7	34.8	LGR035M6C204MEB6
	270000	76*106	3.9	36.9	LGR025M6C274MEA6		230000	76*131	4.4	37.2	LGR035M6C234MED1
	280000	65*141	4.6	33.7	LGR025M6C284MDE1		240000	89*106	4.9	36.0	LGR035M6C244MFA6
	320000	76*116	3.5	40.0	LGR025M6C324MEB6		260000	76*141	4.0	39.9	LGR035M6C264MEE1
	370000	76*131	3.3	42.7	LGR025M6C374MED1		270000	76*146	3.9	41.3	LGR035M6C274MEE6
	390000	89*106	3.8	40.9	LGR025M6C394MFA6		280000	89*116	4.5	39.0	LGR035M6C284MFB6
	420000	76*141	3.2	44.9	LGR025M6C424MEB1		330000	89*131	4.0	42.6	LGR035M6C334MFD1
	440000	76*146	3.1	46.5	LGR025M6C444MEE6		370000	89*141	3.6	46.0	LGR035M6C374MFE1
	460000	89*116	3.5	44.4	LGR025M6C464MFB6		380000	76*192	3.8	45.3	LGR035M6C384MEK2
	530000	89*131	3.2	47.4	LGR025M6C534MFD1		390000	89*146	3.5	47.5	LGR035M6C394MFE6
	600000	89*141	3.1	50.2	LGR025M6C604MFE1		440000	76*217	3.6	48.1	LGR035M6C444MEN7
	610000	76*192	3.1	50.2	LGR025M6C614MEK2		540000	89*192	3.4	52.1	LGR035M6C544MFK2
	630000	89*146	2.9	51.8	LGR025M6C634MFE6		630000	89*217	3.3	55.2	LGR035M6C634MNF7
	710000	76*217	3.0	52.8	LGR025M6C714MEN7		4500	35*40	47.9	4.7	LGR050M5B452MA40
870000	89*192	3.0	55.6	LGR025M6C874MFK2	7600	35*55	30.9	6.4	LGR050M5B762MA55		
1000000	89*217	2.9	58.3	LGR025M6C105MNF7	11000	35*65	21.8	8.3	LGR050M5B113MA65		
35v 40sv	6600	35*40	41.7	5.0	LGR035M5B662MA40	14000	35*80	20.9	9.0	LGR050M5B143MA80	
	11000	35*55	26.7	6.9	LGR035M5B113MA55	14000	35*55	22.8	8.7	LGR050M5B143MA55	
	16000	35*65	19.5	8.7	LGR035M5B163MA65	16000	35*65	20.2	10.0	LGR050M5B163MA65	
	20000	35*55	22.3	8.8	LGR035M5B203MA55	17000	50*55	25.3	9.0	LGR050M5B173MC55	
	21000	35*80	19.4	9.3	LGR035M5B213MA80	18000	35*90	17.8	10.3	LGR050M5B183MA90	
	24000	35*65	19.2	10.2	LGR035M5B243MA65	21000	35*106	17.3	11.0	LGR050M5B213MAA6	
	26000	35*90	19.7	9.8	LGR035M5B263MA90	22000	50*65	20.8	10.7	LGR050M5B223MC65	
	26000	50*55	24.5	9.1	LGR035M5B263MC55	23000	35*80	15.6	12.1	LGR050M5B233MA80	
	32000	35*106	18.7	10.5	LGR035M5B323MAA6	25000	35*116	16.8	11.6	LGR050M5B253MAB6	
	33000	50*65	20.1	10.8	LGR035M5B333MC65	29000	35*131	15.1	12.7	LGR050M5B293MAD1	
	34000	35*80	15.5	12.1	LGR035M5B343MA80	29000	50*80	16.3	12.8	LGR050M5B293MC80	
	37000	35*116	16.7	11.6	LGR035M5B373MAB6	32000	35*141	13.8	13.8	LGR050M5B323MAE1	
	42000	35*131	14.8	12.9	LGR035M5B423MAD1	34000	65*65	15.1	14.4	LGR050M6C343MD65	
	43000	35*90	13.2	13.8	LGR035M5B433MA90	36000	35*106	12.0	15.2	LGR050M5B363MAA6	
	43000	50*80	15.9	13.0	LGR035M5B433MC80	37000	50*90	13.6	14.8	LGR050M5B373MC90	
	48000	35*141	13.5	14.0	LGR035M5B483MAE1	42000	35*116	10.8	16.6	LGR050M5B423MAB6	
	51000	65*65	14.8	14.5	LGR035M6C513MD65	46000	50*106	11.9	16.5	LGR050M5B463MCA6	
	53000	35*106	11.8	15.3	LGR035M5B533MAA6	48000	65*80	12.0	17.1	LGR050M6C483MD80	
	55000	50*90	13.2	15.0	LGR035M5B553MC90	49000	35*131	9.8	18.1	LGR050M5B493MAD1	
	62000	35*116	10.6	16.8	LGR035M5B623MAB6	54000	50*116	10.8	18.0	LGR050M5B543MCB6	
67000	50*106	11.6	16.7	LGR035M5B673MCA6	55000	35*141	9.5	19.1	LGR050M5B553MAE1		
70000	65*80	11.5	17.2	LGR035M6C713MD80	62000	50*131	10.0	19.4	LGR050M5B623MCD1		
71000	65*80	11.5	17.5	LGR035M6C713MD80	62000	65*90	10.3	19.4	LGR050M6C623MD90		
72000	35*131	9.8	18.2	LGR035M5B723MAD1	70000	50*141	9.5	20.5	LGR050M5B703MCE1		
80000	50*116	10.5	18.2	LGR035M5B803MCB6	72000	76*80	9.1	22.0	LGR050M6C723ME80		
82000	35*141	9.4	19.2	LGR035M5B823MAE1	75000	65*106	8.9	21.8	LGR050M6C753MDA6		
91000	65*90	9.4	20.3	LGR035M6C913MD90	89000	65*116	7.9	24.0	LGR050M6C893MDB6		
92000	50*131	9.8	19.5	LGR035M5B923MCD1	92000	76*90	7.7	25.1	LGR050M6C923ME90		
100000	50*141	9.4	20.7	LGR035M5B104MCE1	100000	65*131	7.2	26.0	LGR050M6C104MDD1		
110000	65*106	8.2	22.6	LGR035M6C114MDA6	110000	76*106	6.9	27.6	LGR050M6C114MEA6		



50v 65sv	120000	65*141	6.7	27.9	LGR050M6C124MDE1	63v 75sv	120000	76*141	7.9	28.5	LGR063M6C124MEE1
	130000	76*116	6.1	30.4	LGR050M6C134MEB6		130000	76*146	7.5	29.6	LGR063M6C134MEE6
	150000	76*131	5.9	32.0	LGR050M6C154MED1		130000	89*116	9.0	27.6	LGR063M6C134MFB6
	150000	89*106	6.4	31.7	LGR050M6C154MFA6		150000	89*131	7.9	30.3	LGR063M6C154MFD1
	170000	76*141	5.6	33.8	LGR050M6C174MEE1		170000	89*141	7.2	32.8	LGR063M6C174MFE1
	180000	76*146	5.4	35.0	LGR050M6C184MEB6		180000	76*192	6.5	35.0	LGR063M6C184MEK2
	180000	89*116	5.7	34.7	LGR050M6C184MFB6		180000	89*146	6.8	34.0	LGR063M6C184MFE6
	200000	89*131	5.4	36.8	LGR050M6C204MFD1		210000	76*217	5.7	38.3	LGR063M6C214MEN7
	230000	89*141	5.0	39.0	LGR050M6C234MFE1		250000	89*192	5.8	40.2	LGR063M6C254MFK2
	250000	89*146	5.30	40.0	LGR050M6C254MFE6		290000	89*217	5.2	43.9	LGR063M6C294MFn7
	260000	76*192	5.0	42.0	LGR050M6C264MEK2		2700	35*40	76.2	3.7	LGR075M5B272MA40
	300000	76*217	4.0	45.0	LGR050M6C304MEN7		4300	35*55	50.7	5.0	LGR075M5B432MA55
	340000	89*192	4.0	47.0	LGR050M6C344MFK2		6400	35*65	35.0	6.5	LGR075M5B642MA65
	400000	89*217	4.0	51.0	LGR050M6C404MFn7		8300	35*55	55.6	5.6	LGR075M5B832MA55
63v 75sv	3400	35*40	60.6	4.1	LGR063M5B342MA40	8600	35*96	34.0	7.1	LGR075M5B862MA96	
	5800	35*55	39.0	5.7	LGR063M5B582MA55	9800	35*65	47.3	6.5	LGR075M5B982MA65	
	8200	35*65	27.4	7.4	LGR063M5B822MA65	10000	50*55	34.8	7.7	LGR075M5B103MC55	
	11000	35*80	25.2	8.2	LGR063M5B113MA80	11000	35*90	31.1	7.8	LGR075M5B113MA90	
	11000	35*55	27.9	7.9	LGR063M5B113MA55	11000	50*65	27.5	9.3	LGR075M5B113MC65	
	12000	35*65	25.6	8.8	LGR063M5B123MA65	13000	35*106	28.2	8.6	LGR075M5B133MAA6	
	13000	50*55	28.0	8.5	LGR063M5B133MC55	14000	35*90	34.1	8.2	LGR075M5B143MA90	
	14000	35*90	23.7	8.9	LGR063M5B143MA90	15000	35*116	24.5	9.6	LGR075M5B153MAB6	
	15000	50*65	22.6	10.2	LGR063M5B153MC65	16000	50*80	21.4	11.2	LGR075M5B163MC80	
	16000	35*106	20.4	10.1	LGR063M5B163MAA6	17000	35*131	22.5	10.4	LGR075M5B173MAD1	
	17000	35*80	19.5	10.8	LGR063M5B173MA80	18000	35*90	26.9	9.7	LGR075M5B183MA90	
	19000	35*116	18.1	11.2	LGR063M5B193MAB6	19000	35*141	20.4	11.3	LGR075M5B193MAE1	
	20000	50*80	18.1	12.1	LGR063M5B203MC80	19000	65*65	30.0	10.2	LGR075M6C193MD65	
	22000	35*131	16.4	12.2	LGR063M5B223MAD1	21000	35*106	22.3	11.1	LGR075M5B213MAA6	
	22000	35*90	16.2	12.5	LGR063M5B223MA90	21000	50*90	18.0	12.8	LGR075M5B213MC90	
	24000	65*65	26.8	10.8	LGR063M6C243MD65	25000	35*116	19.2	12.5	LGR075M5B253MAB6	
	25000	35*141	15.1	13.2	LGR063M5B253MAE1	25000	50*106	15.6	14.4	LGR075M5B253MCA6	
	26000	50*90	15.1	14.0	LGR063M5B263MC90	26000	65*80	21.6	12.7	LGR075M6C263MD80	
	27000	35*106	14.2	14.0	LGR063M5B273MAA6	29000	35*131	16.9	13.8	LGR075M5B293MAD1	
	32000	35*116	12.8	15.3	LGR063M5B323MAB6	30000	50*116	13.9	15.8	LGR075M5B303MCB6	
	32000	50*106	13.3	15.6	LGR063M5B323MCA6	33000	35*141	15.2	15.1	LGR075M5B333MAE1	
	34000	65*80	19.3	13.5	LGR063M6C343MD80	34000	50*131	12.8	17.1	LGR075M5B343MCD1	
	37000	35*131	11.8	16.5	LGR063M5B373MAD1	34000	65*90	17.8	14.8	LGR075M6C343MD90	
	38000	50*116	12.1	17.0	LGR063M5B383MCB6	39000	50*141	12.0	18.3	LGR075M5B393MCE1	
	42000	35*141	11.2	17.6	LGR063M5B423MAE1	40000	76*80	18.0	15.6	LGR075M6C403ME80	
	43000	65*90	17.1	15.1	LGR063M6C433MD90	42000	65*106	15.1	16.7	LGR075M6C423MDB6	
	44000	50*131	11.3	18.3	LGR063M5B443MCD1	49000	65*116	13.5	18.4	LGR075M6C493MDB6	
	49000	50*141	10.7	19.4	LGR063M5B493MCE1	51000	76*90	14.4	18.3	LGR075M6C513ME90	
	50000	76*80	14.9	17.2	LGR063M6C503ME80	57000	65*131	12.0	20.2	LGR075M6C573MDD1	
	53000	65*106	13.7	17.5	LGR063M6C533MDA6	64000	65*141	11.2	21.5	LGR075M6C643MDE1	
	62000	65*116	11.8	19.6	LGR063M6C623MDB6	74000	76*116	11.8	21.9	LGR075M6C743MEB6	
	65000	76*90	12.1	20.0	LGR063M6C653ME90	85000	76*131	10.4	24.1	LGR075M6C853MED1	
	72000	65*131	11.0	21.1	LGR063M6C723MDD1	85000	89*90	11.8	23.2	LGR075M6C853MF90	
	79000	76*106	10.8	22.1	LGR063M6C793MEA6	96000	76*141	9.4	26.2	LGR075M6C963MEE1	
82000	65*141	10.5	22.3	LGR063M6C823MDE1	100000	76*146	8.9	27.2	LGR075M6C104MEE6		
93000	76*116	9.9	23.9	LGR063M6C933MEB6	100000	89*116	10.7	25.3	LGR075M6C104MFB6		
110000	76*131	8.8	26.3	LGR063M6C114MED1	120000	89*131	9.4	27.8	LGR075M6C124MFD1		
110000	89*106	9.9	25.4	LGR063M6C114MFA6	130000	89*141	8.4	30.2	LGR075M6C134MFE1		



75v 95sv	140000	76*192	7.7	32.1	LGR075M6C144MEK2		1400	35*90	69.5	5.2	LGR250M5B142MA90
	160000	76*146	6.8	35.1	LGR075M6C164MEB6		1700	50*65	65.7	6.0	LGR250M5B172MC65
	190000	89*192	6.9	36.8	LGR075M6C194MFK2		1800	35*80	61.1	6.1	LGR250M5B182MA80
	220000	89*217	6.2	40.2	LGR075M6C224MFN7		2000	35*116	51.5	6.6	LGR250M5B202MAB6
200v 250sv	540	35*40	206.0	2.3	LGR200M5B540MA40	250V 300SV	2300	35*146	44.1	7.4	LGR250M5B232MAE6
	770	35*55	140.0	3.0	LGR200M5B770MA55		2400	50*80	46.2	7.6	LGR250M5B242MC80
	970	35*65	101.0	3.9	LGR200M5B970MA65		2600	35*141	38.4	8.3	LGR250M5B262MAE1
	1400	35*80	78.5	4.6	LGR200M5B142MA80		2800	35*106	40.4	8.3	LGR250M5B282MAA6
	1500	35*55	79.1	4.7	LGR200M5B152MA55		3100	50*90	38.1	8.8	LGR250M5B312MC90
	1600	50*55	82.0	5.0	LGR200M5B162MC55		3300	35*116	34.7	9.3	LGR250M5B332MAB6
	1700	35*90	63.9	5.4	LGR200M5B172MA90		3700	65*80	32.0	10.5	LGR250M6C372MD80
	2100	35*106	51.7	6.3	LGR200M5B212MAA6		3800	35*131	30.5	10.3	LGR250M5B382MAD1
	2200	50*65	61.0	6.2	LGR200M5B222MC65		4300	35*141	27.3	11.2	LGR250M5B432MAE1
	2400	35*80	48.4	6.9	LGR200M5B242MA80		4500	50*116	26.9	11.4	LGR250M5B452MCB6
	2500	35*116	43.2	7.2	LGR200M5B252MAB6		4700	65*90	25.0	12.4	LGR250M6C472MD90
	2900	35*131	37.8	8.0	LGR200M5B292MAD1		5200	50*131	23.6	12.6	LGR250M5B522MCD1
	3100	50*80	46.1	7.6	LGR200M5B312MC80		5600	76*80	27.6	12.6	LGR250M6C562ME80
	3300	35*141	33.4	8.9	LGR200M5B332MAE1		5800	65*106	20.7	14.3	LGR250M6C582MDA6
	3500	65*65	42.2	8.6	LGR200M6C352MD65		5900	50*141	21.0	13.8	LGR250M5B592MCE1
	3800	35*106	31.3	9.4	LGR200M5B382MAA6		6900	65*116	17.7	16.1	LGR250M6C692MDB6
	4000	50*90	36.2	9.0	LGR200M5B402MC90		7200	76*90	21.6	15.0	LGR250M6C722ME90
	4500	35*116	26.8	10.6	LGR200M5B452MAB6		7900	65*131	15.5	17.7	LGR250M6C792MDD1
	4900	50*106	28.5	10.6	LGR200M5B492MCA6		8800	76*106	17.6	17.3	LGR250M6C882MEA6
	5200	35*131	23.5	11.7	LGR200M5B522MAD1		9000	65*141	13.8	19.4	LGR250M6C902MDE1
	5800	50*116	24.4	12.0	LGR200M5B582MCB6		10000	76*116	16.3	18.6	LGR250M6C103MEB6
	5900	35*141	21.0	12.8	LGR200M5B592MAE1		11000	89*106	19.5	18.1	LGR250M6C113MFA6
	6200	65*90	22.3	13.2	LGR200M6C622MD90		12000	76*131	14.3	20.6	LGR250M6C123MED1
	6700	50*131	21.7	13.2	LGR200M5B672MCD1		13000	89*116	17.2	19.9	LGR250M6C133MFB6
	7600	50*141	19.6	14.3	LGR200M5B762MCE1		14000	76*141	12.0	23.2	LGR250M6C143MEE1
	9000	65*116	17.3	16.2	LGR200M6C902MDB6		15000	76*146	11.5	23.9	LGR250M6C153MEB6
	9800	76*90	23.7	14.3	LGR200M6C982ME90		17000	89*141	13.2	24.2	LGR250M6C173MFE1
	10000	65*131	15.8	17.6	LGR200M6C103MDD1		18000	89*146	12.8	24.8	LGR250M6C183MFE6
	12000	76*106	19.7	16.3	LGR200M6C123MEA6		21000	76*192	9.6	30.9	LGR250M6C213MEK2
	14000	76*116	16.9	18.3	LGR200M6C143MEB6		24000	76*217	7.0	34.6	LGR250M6C243MEN7
	15000	89*106	17.1	19.3	LGR200M6C153MFA6		25000	89*192	10.5	30.0	LGR250M6C253MFK2
	16000	76*131	14.8	20.2	LGR200M6C163MED1		29000	89*217	9.2	33.0	LGR250M6C293MFN7
18000	76*141	13.3	22.0	LGR200M6C183MEE1	300v 350sv	1600	35*116	77.4	5.4	LGR300M5B162MAB6	
19000	76*146	15.3	20.7	LGR200M6C193MEB6		1800	35*131	65.7	6.1	LGR300M5B182MAD1	
20000	89*116	12.7	23.3	LGR200M6C203MFB6		1900	50*80	71.1	6.1	LGR300M5B192MC80	
21000	89*131	13.4	23.3	LGR200M6C213MFD1		2000	35*141	60.3	6.6	LGR300M5B202MAE1	
24000	89*141	12.0	25.3	LGR200M6C243MFE1		2200	35*106	56.7	7.0	LGR300M5B242MAA6	
25000	89*146	11.5	26.3	LGR200M6C253MFE6		2400	50*90	55.5	7.3	LGR300M5B242MC90	
26000	76*192	11.7	26.4	LGR200M6C263MEK2		2600	35*116	48.5	7.9	LGR300M5B262MAB6	
31000	76*217	9.6	29.6	LGR200M6C313MEN7		2900	50*106	45.7	8.4	LGR300M5B292MCA6	
35000	89*192	9.3	32.1	LGR200M6C353MFK2		2900	65*80	46.5	8.7	LGR300M6C292MD80	
40000	89*217	7.9	35.5	LGR200M6C403MFN7		3000	35*131	42.5	8.7	LGR300M5B302MAD1	
250V 300SV	380	35*40	260	2.0		LGR250M5B380MA40	3400	35*141	37.9	9.5	LGR300M5B342MAE1
	680	35*55	156	2.9		LGR250M5B680MA55	3500	50*116	38.9	9.5	LGR300M5B352MCB6
	830	35*65	119	3.5		LGR250M5B830MA65	3700	65*90	38.1	10.1	LGR300M6C372MD90
	1100	35*80	87.5	4.4		LGR250M5B112MA80	4000	50*131	34.0	10.5	LGR300M5B402MCD1
	1200	50*55	94.6	4.6		LGR250M5B122MC55	4100	76*80	42.8	10.0	LGR300M6C412ME80
	1300	35*65	82.8	4.9		LGR250M5B132MA65	4500	65*106	29.9	11.9	LGR300M6C452MDA6



300v 350sv	5200	76*90	34.0	11.9	LGR300M6C522ME90	350v 400sv	8700	89*131	22.5	18.0	LGR350M6C872MFD1
	5300	65*116	25.5	13.4	LGR300M6C532MDB6		9800	89*141	20.0	19.6	LGR350M6C982MFE1
	6100	65*131	22.2	14.8	LGR300M6C612MDD1		10000	76*192	17.1	21.8	LGR350M6C103MEK2
	6400	76*106	26.2	14.2	LGR300M6C642MEA6		10000	89*146	18.9	20.4	LGR350M6C103MFE6
	6900	65*141	19.8	16.2	LGR300M6C692MDE1		12000	76*217	14.2	24.3	LGR350M6C123MEN7
	7500	76*116	23.6	15.5	LGR300M6C752MEB6		15000	89*192	14.9	25.4	LGR350M6C153MFK2
	8700	76*131	20.5	17.2	LGR300M6C872MED1		17000	89*217	12.4	28.3	LGR350M6C173MFN7
	8900	89*106	21.0	17.4	LGR300M6C892MFA6		400v 450sv	160	35*40	652.0	1.3
	9800	89*141	18.0	18.9	LGR300M6C982MFE1	250		35*55	408.0	1.8	LGR400M5B250MA55
	10000	76*146	17.0	19.7	LGR300M6C103MEE6	380		35*65	273.0	2.3	LGR400M5B380MA65
	12000	89*131	16.0	21.3	LGR300M6C123MFD1	500		35*80	205.0	2.9	LGR400M5B500MA80
	13000	89*141	14.3	23.2	LGR300M6C133MFE1	570		35*55	189.0	3.0	LGR400M5B570MA55
	14000	89*146	13.5	24.2	LGR300M6C143MFE6	610		35*65	174.0	3.4	LGR400M5B610MA65
	15000	76*192	13.2	24.9	LGR300M6C153MEK2	630		35*90	164.0	3.4	LGR400M5B630MA90
	17000	76*217	10.8	27.9	LGR300M6C173MEN7	750		35*106	137.0	3.9	LGR400M5B750MAA6
	19000	89*192	11.0	29.5	LGR300M6C193MFK2	780		50*55	142.0	4.1	LGR400M5B780MC55
22000	89*217	9.3	32.6	LGR300M6C223MFN7	790	35*65		134.0	4.1	LGR400M5B790MA65	
350v 400sv	200	35*40	605.0	1.3	LGR350M5B200MA40	880		35*116	118.0	4.4	LGR400M5B880MAB6
	320	35*55	379.0	1.8	LGR350M5B320MA55	1000		35*131	104.0	4.9	LGR400M5B102MAD1
	470	35*65	253.0	2.4	LGR350M5B470MA65	1100		35*141	92.4	5.3	LGR400M5B112MAE1
	630	35*80	190.0	3.0	LGR350M5B630MA80	1200		35*106	85.5	5.7	LGR400M5B122MAA6
	720	35*55	177.30	3.1	LGR350M5B720MA55	1300		50*90	85.0	5.9	LGR400M5B132MC90
	770	35*65	162.0	3.5	LGR350M5B770MA65	1500		35*116	72.9	6.4	LGR400M5B152MAB6
	790	35*90	153.0	3.5	LGR350M5B790MA90	1600		50*106	69.8	6.8	LGR400M5B162MCA6
	950	35*106	127.0	4.0	LGR350M5B950MAA6	1700		35*131	63.4	7.1	LGR400M5B172MAD1
	970	50*65	132.0	4.2	LGR350M5B970MC65	1800		65*80	65.3	7.3	LGR400M6C182MD80
	990	35*90	125.0	4.3	LGR350M5B990MA90	1900		35*141	56.2	7.8	LGR400M5B192MAE1
	1100	35*116	110.0	4.5	LGR350M5B112MAB6	2000		50*116	59.3	7.7	LGR400M5B202MCB6
	1300	35*131	96.3	5.0	LGR350M5B132MAD1	2100		50*131	51.7	8.5	LGR400M5B212MCD1
	1400	35*141	85.9	5.5	LGR350M5B142MAE1	2200		65*90	52.0	8.6	LGR400M6C222MD90
	1500	65*65	86.9	6.0	LGR350M6C152MD65	2300		76*80	57.5	8.8	LGR400M6C232ME80
	1600	35*106	79.9	5.9	LGR350M5B162MAA6	2400	50*141	45.9	9.3	LGR400M5B242MCE1	
	1800	35*116	67.8	6.6	LGR350M5B182MAB6	2600	65*106	42.8	9.9	LGR400M6C262MDA6	
	2000	50*106	65.1	7.0	LGR350M5B202MCA6	3000	76*90	44.9	10.4	LGR400M6C302ME90	
	2100	35*131	59.1	7.4	LGR350M5B212MAD1	3100	65*116	35.6	11.3	LGR400M6C312MDB6	
	2200	65*80	61.0	7.6	LGR350M6C222MD80	3500	65*131	31.7	12.4	LGR400M6C352MDD1	
	2300	50*116	55.4	8.0	LGR350M5B232MCB6	3600	76*106	37.0	11.9	LGR400M6C362MEA6	
	2400	35*141	52.4	8.1	LGR350M5B242MAE1	4000	65*141	31.5	12.8	LGR400M6C402MDE1	
	2700	50*131	48.3	8.8	LGR350M5B272MCD1	4300	76*116	28.1	14.2	LGR400M6C432MEB6	
	2900	76*80	54.0	9.0	LGR350M6C292ME80	4900	76*131	27.4	14.8	LGR400M6C492MED1	
	3100	50*141	42.8	9.7	LGR350M5B312MCE1	5100	89*106	31.9	14.1	LGR400M6C512MFE1	
	3300	65*106	39.9	10.3	LGR350M6C332MDA6	5600	76*141	24.4	16.2	LGR400M6C562MEE1	
	3700	76*90	41.7	10.8	LGR350M6C372ME90	5900	76*146	23.1	16.9	LGR400M6C592MEE6	
	3900	65*116	34.0	11.6	LGR350M6C392MDB6	6000	89*116	27.4	15.8	LGR400M6C602MFB6	
	4500	65*131	29.6	12.8	LGR350M6C452MDD1	6900	89*131	23.9	17.5	LGR400M6C692MFD1	
	4600	76*106	34.7	12.3	LGR350M6C462MEA6	7800	89*141	21.2	19.0	LGR400M6C782MFE1	
	5100	65*141	26.2	14.1	LGR350M6C512MDE1	8200	76*192	18.2	21.2	LGR400M6C822MEK2	
	5400	76*116	29.6	13.9	LGR350M6C542MEB6	8300	89*146	20.1	19.8	LGR400M6C832MFE6	
	6200	76*131	25.8	15.3	LGR350M6C622MED1	9500	76*217	15.1	23.6	LGR400M6C952MEN7	
	6400	89*106	29.9	14.6	LGR350M6C642MFA6	11000	89*192	15.8	24.7	LGR400M6C113MFK2	
	7000	76*141	22.9	16.7	LGR350M6C702MEE1	13000	89*217	13.1	27.5	LGR400M6C133MFN7	
7500	89*116	25.7	16.3	LGR350M6C752MFB6							



450v 500sv	140	35*40	797.0	1.1	LGR451M5B140MA40	500v 550sv	480	50*65	274.0	2.9	LGR500M5B480MC65
	220	35*55	438.0	1.7	LGR451M5B220MA55		480	35*80	265.0	2.9	LGR500M5B480MA80
	330	35*65	337.0	2.1	LGR451M5B330MA65		530	35*116	261.0	2.9	LGR500M5B530MA66
	420	35*55	264.0	2.6	LGR451M5B420MA55		610	35*131	231.0	3.3	LGR500M5B610MAD1
	440	35*80	253.0	2.6	LGR451M5B440MA80		620	35*90	202.0	3.5	LGR500M5B620MA90
	520	35*55	213.0	3.1	LGR451M5B520MA55		650	50*80	200.0	3.7	LGR500M5B650MC80
	550	35*90	203.0	3.1	LGR451M5B550MA90		690	35*141	195.0	3.7	LGR500M5B690MAE1
	600	50*55	228.0	3.0	LGR451M5B600MC55		760	35*106	169.0	4.0	LGR500M5B760MAA6
	660	35*106	169.0	3.5	LGR451M5B660MAA6		770	65*65	171.0	4.3	LGR500M6C770MD65
	670	35*80	165.0	3.7	LGR451M5B670MA80		820	50*90	156.0	4.4	LGR500M5B820MC90
	680	50*65	178.0	3.6	LGR451M5B680MC65		890	35*116	143.0	4.6	LGR500M5B890MAB6
	760	35*116	146.0	3.9	LGR451M5B760MAB6		960	50*106	136.0	4.9	LGR500M5B960MCA6
	870	35*131	128.0	4.4	LGR451M5B870MAD1		1000	35*131	125.0	5.1	LGR500M5B1020MAD1
	980	35*141	114.0	4.8	LGR451M5B980MAE1		1100	50*116	115.0	5.5	LGR500M5B1120MCB6
	1000	35*106	107.0	5.1	LGR451M5B1020MCA6		1100	65*106	122.0	5.4	LGR500M6C1120MDA6
	1100	50*90	109.0	5.2	LGR451M5B1120MC90		1200	35*141	110.0	5.6	LGR500M5B1220MAE1
	1200	65*65	116.0	5.2	LGR451M6C1220MD65		1300	50*131	100.0	6.1	LGR500M5B1320MCD1
	1300	35*116	91.1	5.7	LGR451M5B1320MAB6		1400	65*90	95.1	6.4	LGR500M6C1420MD65
	1400	50*106	89.5	6.0	LGR451M5B1420MCA6		1500	50*141	88.9	6.7	LGR500M5B1520MCE1
	1500	65*80	81.1	6.6	LGR451M6C1520MD80		1600	76*80	86.4	7.1	LGR500M6C1620ME80
	1600	35*141	70.2	7.0	LGR451M5B1620MAE1		1800	65*106	78.1	7.4	LGR500M6C1820MDA6
	1700	50*116	76.0	6.8	LGR451M5B1720MCB6		2000	65*116	66.3	8.3	LGR500M6C2020MDB6
	1900	50*130	66.1	7.5	LGR451M5B1920MCD0		2100	76*90	67.4	8.5	LGR500M6C2120ME90
	2200	76*80	63.8	8.3	LGR451M6C2220ME80		2200	65*131	61.1	8.9	LGR500M6C2220MDD1
	2400	65*106	54.7	8.8	LGR451M6C2420MDA6		2400	65*141	54.7	9.7	LGR500M6C2420MDE1
	2700	76*90	49.8	9.9	LGR451M6C2720ME90		2400	76*106	55.4	9.8	LGR500M6C2420MEA6
	2800	65*116	46.4	9.9	LGR451M6C2820MDB6		2800	76*116	48.1	10.9	LGR500M6C2820MEB6
	3200	65*131	40.4	11.0	LGR451M6C3220MDD1		3300	76*131	43.1	11.8	LGR500M6C3320MED1
	3300	76*106	38.2	11.8	LGR451M6C3320MEA6		3400	89*106	40.1	12.6	LGR500M6C3420MFA6
	3600	65*141	35.4	12.1	LGR451M6C3620MDE1		3700	76*141	37.5	13.1	LGR500M6C3720MEE1
	3900	76*116	35.7	12.6	LGR451M6C3920MEB6		3900	76*146	35.5	13.6	LGR500M6C3920MEE6
	4500	76*131	30.9	14.0	LGR451M6C4520MED1		4000	89*116	34.1	14.2	LGR500M6C4020MFB6
	4600	89*106	30.3	14.5	LGR451M6C4620MFA6		4700	89*131	30.0	15.6	LGR500M6C4720MFD1
5100	76*141	27.4	15.3	LGR451M6C5120MEE1	5200	89*141	28.0	16.6	LGR500M6C5220MFE1		
5400	76*146	26.0	15.9	LGR451M6C5420MEB6	5400	76*192	27.9	17.1	LGR500M6C5420MEK2		
5400	89*116	25.7	16.3	LGR451M6C5420MFB6	5600	89*146	26.0	17.4	LGR500M6C5620MFE6		
6300	89*131	22.4	18.0	LGR451M6C6320MFD1	6300	76*217	23.1	19.1	LGR500M6C6320MEN7		
7100	89*141	19.9	19.7	LGR451M6C7120MFE1	7600	89*192	20.5	21.8	LGR500M6C7620MFK2		
7500	89*146	18.8	20.5	LGR451M6C7520MFE6	8800	89*217	16.7	24.4	LGR500M6C8820MFN7		
8200	76*192	20.3	20.0	LGR451M6C8220MEK2	1400	65*106	170.5	4.9	LGR550M6C1420MDA6		
8700	76*217	16.8	22.4	LGR451M6C8720MEN7	1600	65*116	132.6	5.9	LGR550M6C1620MDB6		
10000	89*192	15.1	25.2	LGR451M6C1030MFK2	1900	65*130	1117.7	6.8	LGR550M6C1920MDD0		
11000	89*217	12.7	28.0	LGR451M6C1130MFN7	2200	76*106	90.4	7.8	LGR550M6C2220MEA6		
500v 550sv	100	35*40	1224.0	0.9	LGR500M5B100MA40	2300	65*141	86.5	7.8	LGR550M6C2320MDE1	
	150	35*55	722.0	1.3	LGR500M5B150MA55	2500	76*116	79.6	8.4	LGR550M6C2520MEB6	
	220	35*65	546.0	1.7	LGR500M5B220MA65	2900	76*131	64.0	9.7	LGR550M6C2920MED1	
	260	35*55	498.0	1.9	LGR500M5B260MA55	3300	76*141	54.6	10.9	LGR550M6C3320MEE1	
	300	35*80	410.0	2.3	LGR500M5B300MA80	3700	76*146	50.2	12.24	LGR550M6C3720MEE6	
	330	50*55	393.0	2.4	LGR500M5B330MC55	5100	76*192	36.4	16.22	LGR550M6C5120MEK2	
	370	35*80	347.0	2.4	LGR500M5B370MA80						
	380	35*90	328.0	2.7	LGR500M5B380MA90						
460	35*106	293.0	2.9	LGR500M5B460MAA6							



In addition, ø 100 products are tentative specifications, please confirm the time of ordering

◆ RTED RIPPLE CURRENT MUIERS

The ripple frequency and standard list of the specified value is not at the same time, please use the value is less than the following.

● Frequency Multipliers

Frequency (HZ)	120	300	1K	3K
coefficient	1.0	1.1	1.3	1.4

Note : The endurance of capacitors is shorted with internal heating produced by ripple current at the rate of halving the lifetime with every 5 to 10°C rise. When long life performance is required in actual use, the rms ripple current has to be reduced. Also, for the LWS series capacitors, using them at operating

voltage less than their rated voltage can extend their lifetime. For the details, please contact representative of capsun